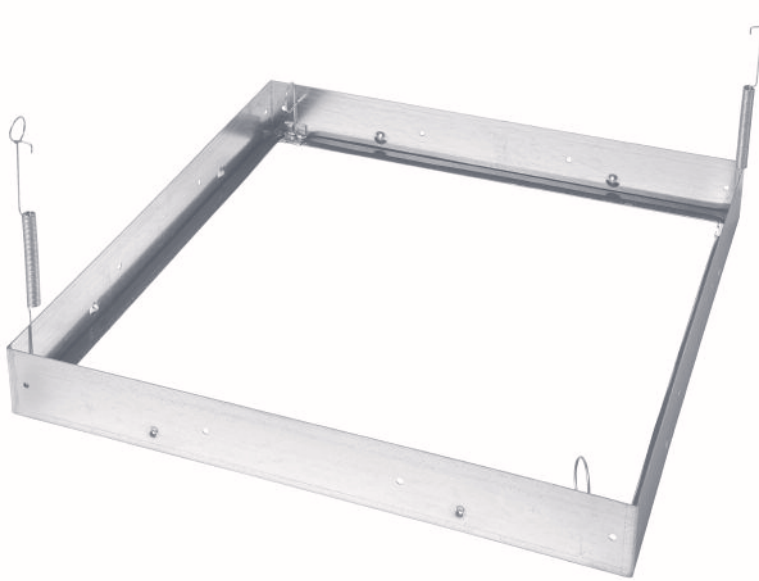


H9B SERIES

BASIC FILTER HOLDING FRAME



FOR BUILT-UP FILTER BANKS



Application: The **H9B SERIES BASIC FILTER HOLDING FRAME** is used in ASHRAE built-up filter banks with **press-fit** fasteners in order to facilitate a leak free system (Refer to the H9 Series Fastener Tech Sheet for more information). This frame is used for applications requiring any combination of panel, rigid and bag-type air filters on the upstream or downstream side of the frame. The H9B Series standard sizes make it easy to engineer a new system or retrofit an existing installation, because they can host many combinations of any manufacturers' standard size filters. Select from three different metal alloys to obtain the best frame for your application.

Construction: The H9B Series frame is available in 2", 3" and 4" depths, and is constructed of two corner sections of 16 gauge metal with all seams and corners TIG welded to ensure a rigid and durable assembly. Each flush welded mitered joint is deburred and treated to protect the exposed metal from corrosion. The filter frame includes a 3/4" flange to seal the filter and is available with a closed cell PVC foam gasket. Each frame is supplied with pre-punched holes for field assembly and with dimples to keep filters centered against the retaining flange.

AVAILABLE IN THREE ALLOYS

H9BA

Aluminized Steel

H9BG

Galvanized Steel

H9BS

Stainless Steel

PRODUCT HIGHLIGHTS

- Universal Holding Frame
- Accepts Any Combination of Filters
- 16 gauge Construction
- Filter Centering Dimples
- Welded Seams and PVC Gasketing Provide Leak Free Design

FAST FACTS

LEAD TIME:

7 Business Days

MINIMUM ORDER:

No Minimum Order

SIZING OPTIONS:

Standard and Special Sizes

Please see reverse side for details.

CLASSIFICATION:

UL 900 Class 1

Due to continuing research and development, we reserve the right to make modifications to any product.

H9B SERIES ~ Frame Selection Chart

MODEL	H9BA			H9BG			H9BS		
CONSTRUCTION									
Frame Alloy	16 gauge aluminized steel			16 gauge galvanized steel			16 gauge 304 stainless steel		
Frame Thickness	2", 3" and 4"			2", 3" and 4"			2", 3" and 4"		
Assembly Holes	Clearance for #10-32 fasteners			Clearance for #10-32 fasteners			Clearance for #10-32 fasteners		
APPLICATION									
Application	Built-up filter bank			Built-up filter bank			Built-up filter bank		
Filter Location	Upstream or downstream			Upstream or downstream			Upstream or downstream		
Fasteners	Press-fit			Press-fit			Press-fit		
STANDARD SIZES									
Exact Dimensions (H x W x T)	Part Number	Carton Quantity	Carton Weight	Part Number	Carton Quantity	Carton Weight	Part Number	Carton Quantity	Carton Weight
12 x 24 x 2	H9BA201224	12	39.1	H9BG201224	12	40.3	H9BS201224	12	52.1
16 x 20 x 2	H9BA201620	6	20.7	H9BG201620	6	21.3	H9BS201620	6	27.2
16 x 25 x 2	H9BA201625	6	23.3	H9BG201625	6	24.0	H9BS201625	6	30.6
20 x 20 x 2	H9BA202020	6	22.8	H9BG202020	6	23.5	H9BS202020	6	30.0
20 x 24 x 2	H9BA202024	6	24.8	H9BG202024	6	25.6	H9BS202024	6	32.7
20 x 25 x 2	H9BA202025	6	25.3	H9BG202025	6	26.1	H9BS202025	6	33.4
24 x 24 x 2	H9BA202424	6	26.8	H9BG202424	6	27.7	H9BS202424	6	35.5
12 x 24 x 3	H9BA301224	8	36.1	H9BG301224	8	37.3	H9BS301224	8	35.5
16 x 20 x 3	H9BA301620	4	19.2	H9BG301620	4	19.8	H9BS301620	4	18.9
16 x 25 x 3	H9BA301625	4	21.5	H9BG301625	4	22.2	H9BS301625	4	21.2
20 x 20 x 3	H9BA302020	4	21.1	H9BG302020	4	21.7	H9BS3302020	4	20.7
20 x 24 x 3	H9BA302024	4	23.0	H9BG302024	4	23.7	H9BS302024	4	22.6
20 x 25 x 3	H9BA302025	4	23.4	H9BG302025	4	24.1	H9BS302025	4	23.0
24 x 24 x 3	H9BA302424	4	24.9	H9BG302424	4	25.6	H9BS302424	4	24.4
12 x 24 x 4	H9BA401224	6	34.6	H9BG401224	6	35.7	H9BS401224	6	34.0
16 x 20 x 4	H9BA401620	3	18.4	H9BG401620	3	19.0	H9BS401620	3	18.1
16 x 25 x 4	H9BA401625	3	20.7	H9BG401625	3	21.3	H9BS401625	3	20.3
20 x 20 x 4	H9BA402020	3	20.2	H9BG402020	3	20.8	H9BS402020	3	19.9
20 x 24 x 4	H9BA402024	3	22.0	H9BG402024	3	22.7	H9BS402024	3	21.7
20 x 25 x 4	H9BA402025	3	22.5	H9BG402025	3	23.2	H9BS402025	3	22.1
24 x 24 x 4	H9BA402424	3	23.8	H9BG402424	3	24.6	H9BS402424	3	23.4

H9B SERIES NOTES

SIZING INFORMATION

- Seven standard exact size frames are available in a 2", 3" and 4" exact depth and will accommodate any manufacturers' standard filter sizes.
- Special size frames are made to exact height and width dimensions and are available in a thickness of 2", 3" and 4" exact. [Link: www.amfco.com/linksh9/howto/specialsizes](http://www.amfco.com/linksh9/howto/specialsizes)
- Tolerance height and width: $\pm 1/8"$
- Tolerance thickness: $\pm 1/32"$

CLASSIFICATION AND TEST NOTES

- The H9B Series frame is listed as UL 900 Class 1.

FILTER CLEANING AND COATING

- Clean the frame with isopropyl alcohol.

OPTIONS

- Alloy: The H9B Series frame can be manufactured from an alternate metal alloy to meet your specific application requirements.
- Fasteners: The H9B Series frame is manufactured for use with press-fit fasteners on both the upstream and downstream sides of the frame. Refer to the Fastener Tech Sheet for more information.
- Gaskets: The H9B Series frame can be supplied with a closed cell PVC foam gasket. Specify "with gasket" when ordering.

INSTALLATION NOTES

The following notes represent a basic summary of the installation considerations. Refer to the H9 Series Installation Tech Bulletin for comprehensive installation instructions.
[Link: www.amfco.com/install/H9Series](http://www.amfco.com/install/H9Series)

- Install an unlimited number of frames horizontally.
- Install a maximum of eight frames vertically.
- Assemble frames using #10-32 screw and nuts.
- Install stiffener bars between every other column on installations equal to or greater than three frames wide by four frames high.
- Install 2" flashing around the perimeter of the completed filter bank.
- Apply caulking.

ADDITIONAL INFORMATION

- A submittal drawing for the H9B Series Basic Filter Holding Frame is available.
[Link: www.amfco.com/blueprint/H9B](http://www.amfco.com/blueprint/H9B)



CORNER SECTION NO GASKET