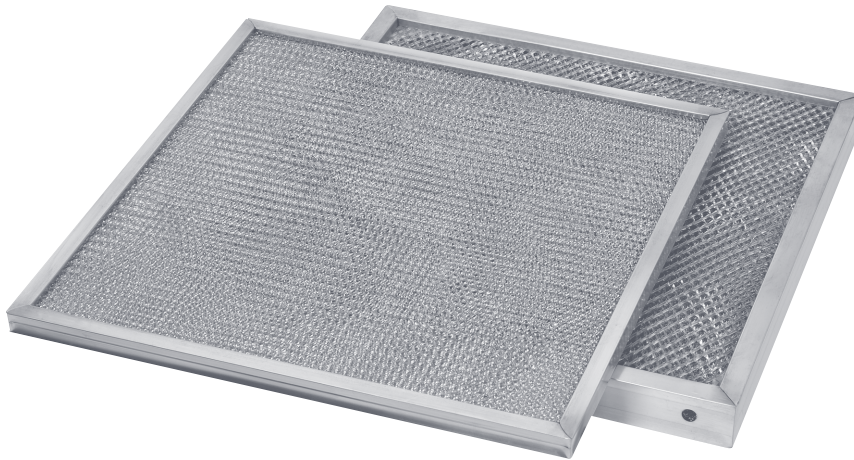


HX SERIES

EXPANDED ALUMINUM FOIL FILTER



FILTERS AIRBORNE PARTICULATE AND COOLANT MIST



AVAILABLE IN ONE ALLOY

HXA

Aluminum

Application: The HX series expanded aluminum foil filter is an impingement type panel filter designed for use in residential, commercial and industrial HVAC applications to remove airborne particulate and coolant mist from the airstream. Popular outdoor applications include outside air intake ducts, rooftop economizer hoods and air handling units. Popular indoor applications include electronic air cleaners, ceiling vent fans, central air conditioners, computer environment systems, room air conditioners and wall heaters.

Construction: The HX Series filter uses an aluminum frame to enclose the media pack. The bonded, progressive-density media pack consists of multiple layers of aluminum foil slit and expanded to several different size openings. The layers are arranged with larger openings at the air entrance and smaller openings at the air exit. This design causes airborne contaminants to be trapped throughout the entire filter depth rather than just on the surface. The frame is made with mitered corners and is secured with pop-rivet(s). The frame has drain holes in three corners.

Filter Cleaning and Coating:

1. To clean a dirty filter, rinse it with a moderate-to-heavy stream of warm water. High-powered steam cleaning or chemical dips are unnecessary and not recommended. nor any adhesive.
2. The HX Series filter is not supplied from the factory with filter adhesive coating. If desired, it may be sprayed before installation with Filter Coat, a water soluble adhesive and detergent. AMFCO does not sell Filter Coat nor any adhesive.

PRODUCT HIGHLIGHTS

- Bonded, Progressive-Density Media
- Versatile for Indoor and Outdoor Use
- All Aluminum Construction
- Lightweight
- Washable and Reusable

FAST FACTS

MINIMUM ORDER:
No Minimum Order

SIZING OPTIONS:
Standard and Special Sizes Available
(See reverse side for details.)

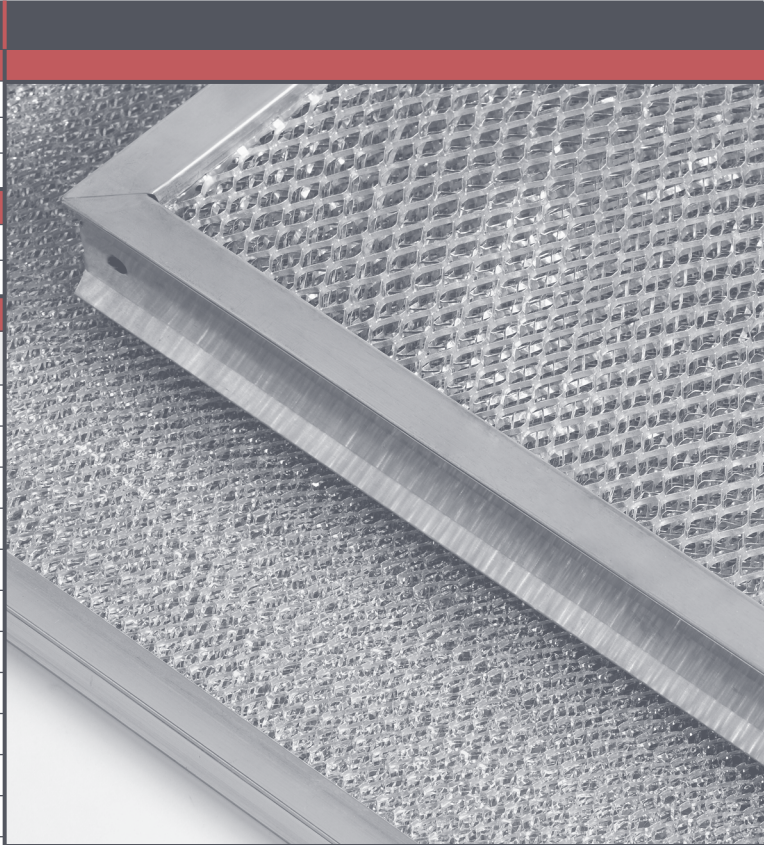
CLASSIFICATION:
UL Classified 900

MAX TEMP:
150 Degrees F

Due to continuing research and development, we reserve the right to make modifications to any product.

HX SERIES ~ Filter Selection Chart

MODEL	HXA		
CONSTRUCTION			
Frame Alloy	.025" aluminum		
Frame Thickness	1/2" exact; nominal* 1" and 2"		
Media	Expanded aluminum foil		
APPLICATION			
Application	Airborne particulate and coolant mist		
Max Operating Temperature	200°		
STANDARD SIZES			
Nominal* Dimensions (H x W x T)	Part Number	Carton Quantity	Carton Weight
12 x 24 x 1	HXA101224	12	12.0
16 x 20 x 1	HXA101620	12	10.0
16 x 25 x 1	HXA101625	12	13.0
20 x 20 x 1	HXA102020	12	13.0
20 x 25 x 1	HXA102025	12	15.0
24 x 24 x 1	HXA102424	12	20.0
12 x 24 x 2	HXA201224	12	20.0
16 x 20 x 2	HXA201620	6	10.0
16 x 25 x 2	HXA201625	6	12.0
20 x 20 x 2	HXA202020	6	12.0
20 x 25 x 2	HXA202025	6	14.0
24 x 24 x 2	HXA202424	6	18.0



BONDED, PROGRESSIVE-DENSITY MEDIA

HE SERIES NOTES

SIZING INFORMATION

* What does Nominal mean? Standard size filters are of a nominal dimension. This means the height and width dimensions are undercut by a certain amount. See below for the exact amount of undercut for each dimension.

** Filter Thickness: 1/2" is exact, nominal 1" (actual 7/8") and nominal 2" (actual 1-3/4").

1. **Standard** nominal filters are 3/8" undercut on the height and width dimensions.
2. **Special** size filters are made to the exact height and width dimensions provided.
3. **Standard and Special** size filters are available in thicknesses of 1/2" exact, nominal 1" (7/8" actual), and nominal 2" (Actual 1-3/4").
4. Tolerance height and width: $\pm 1/8"$
5. Tolerance thickness: $\pm 1/32"$

CLASSIFICATION AND TEST NOTES

1. UL Classified 900
2. Rated Airflow: 350 fpm
3. Recommended Airflow Range: 300 – 500 fpm.
4. Dust Holding Capacity:
 - a. 1" thick: 78 grams per square foot
 - b. 2" thick: 100 grams per square foot
5. Average Arrestance:
 - a. 1" thick: 39% at rated airflow
 - b. 2" thick: 70% at rated airflow
6. Recommended final resistance is .50" W.G.
7. Independent test report available for performance details

INSTALLATION CONSIDERATIONS

1. The HX Series filter may be installed in HVAC systems vertically or horizontally.

