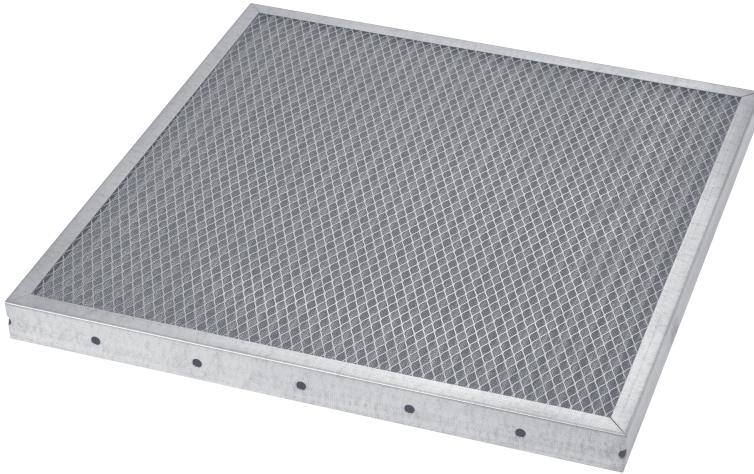


HM SERIES

MOISTURE SEPARATOR



SEPARATES MOISTURE / FILTERS LARGE AIRBORNE PARTICULATE AND COOLANT MIST



Application: The **HM Series Moisture Separator** is an impingement type panel filter that serves two important functions: its primary purpose is to collect large water droplets and oil mist from the airstream and divert the liquid to an appropriate drain; its secondary function is as a washable particulate filter. The HM Series is built for use in outside air ducts, side-access housings and built-up filter banks. Other applications include chilled water coils and mist-type humidifiers. The HM Series is designed for higher airflow velocities. It performs best in a system running at no more than 10% above or below its rated velocity of 500 fpm.

Construction: The HM Series uses a 24-gauge metal frame to enclose the media pack consisting of multiple layers of corrugated and flat screen wire positioned for efficient drainage. The pack is then placed between two layers of expanded metal, and is made to fit firmly inside the frame giving the HM Series filter exceptional strength and durability. The bottom of the filter has 3/8" diameter drain holes and the top is identified with proper positioning for drainage and airflow. The frame is made with mitered corners and is secured with pop-rivet(s).

Filter Cleaning and Coating:

1. To clean a dirty filter, rinse it with a moderate-to-heavy stream of warm water. High-powered steam cleaning or chemical dips are unnecessary and not recommended.
2. The HE Series filter is not supplied from the factory with filter adhesive coating. If desired, it may be sprayed before installation with Filter Coat, a water soluble adhesive and detergent. AMFCO does not sell Filter Coat nor any adhesive.

Due to continuing research and development, we reserve the right to make modifications to any product.

AVAILABLE IN TWO ALLOYS

HMG

Galvanized Steel

HMS

Stainless Steel

PRODUCT HIGHLIGHTS

- Rigid, 24 Gauge Metal Construction
- Corrosion Resistant
- Washable and Reusable
- Available with Side Gaskets
- Corner Drain Holes

FAST FACTS

MINIMUM ORDER:
No Minimum Order

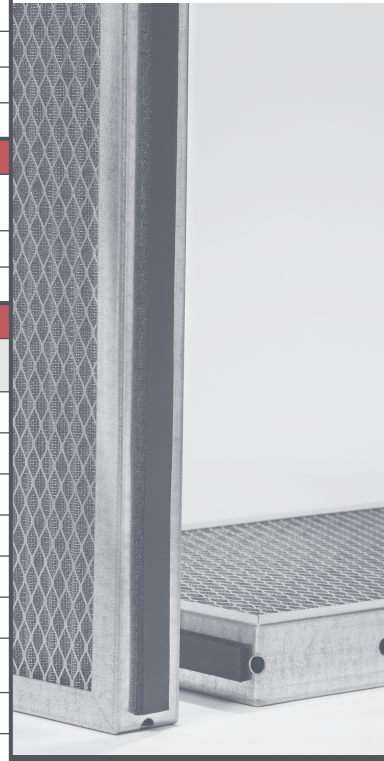
SIZING OPTIONS:
Standard and Special Sizes Available
(See reverse side for details.)

CLASSIFICATION:
UL Classified 900

MAX TEMP:
HMG – 325 Degrees F
HMS – 900 Degrees F

HM SERIES ~ Filter Selection Chart

MODEL	HMG			HMS		
CONSTRUCTION						
Frame Alloy	18 gauge galvanized steel			18 gauge 304 stainless steel		
Frame Thickness	Nominal* 2"			Nominal* 2"		
Face Grids	28 gauge galvanized steel			28 gauge stainless steel		
Media	Aluminum screen wire			Stainless steel screen wire		
APPLICATION						
Application	Eliminate moisture Airborne particulate and coolant mist			Eliminate moisture Airborne particulate and coolant mist		
Max Operating Temperature	325°			900°		
Washability	Frequent and rigorous			Frequent and rigorous		
STANDARD SIZES						
Nominal* Dimensions (H x W x T)	Part Number	Carton Quantity	Carton Weight	Part Number	Carton Quantity	Carton Weight
12 x 24 x 1	HMG101224	12	27.0	HMS101224	12	28.0
24 x 12 x 1	HMG102412	12	27.0	HMS102412	12	28.0
24 x 24 x 1	HMG102424	6	55.0	HMS102424	12	56.0
12 x 12 x 2	HMG201224	6	22.0	HMS201224	6	23.0
24 x 12 x 2	HMG202412	6	22.0	HMS202412	6	23.0
24 x 24 x 2	HMG202424	6	32.0	HMS202424	6	33.0
12 x 24 x 4	HMG401224	3	12.0	HMS401224	3	13.0
24 x 12 x 4	HMG402412	3	12.0	HMS402412	3	13.0
24 x 24 x 4	HMG402424	3	24.0	HMS402424	3	25.0



SHOWN WITH SIDE GASKETS

HM SERIES NOTES

SIZING INFORMATION

* What does Nominal mean? Standard size filters are of a nominal dimension. This means the height and width dimensions are undercut by a certain amount. See below for the exact amount of undercut for each dimension.

** Filter Thickness: Nominal 1" (actual 7/8"), nominal 2" (actual 1-3/4") and nominal 4" (actual 3-3/4").

1. **Standard** nominal filters are 5/8" undercut on the height and width dimensions.
2. **Special** size filters are made to the exact height and width dimensions provided.
3. **Standard and Special** size filters are available in nominal 1" (7/8" actual), nominal 2" (Actual 1-3/4") and nominal 4" (3-3/4").
4. Tolerance height and width: $\pm 1/8"$
5. Tolerance thickness: $\pm 1/32"$

CLASSIFICATION AND TEST NOTES

1. UL Classified 900
2. Rated Airflow: 500 fpm
3. Recommended Airflow Range: 450 – 550 fpm.
4. Dust Holding Capacity:
 - a. 2" thick: 51 grams per square foot
5. Average Arrestance:
 - a. 2" thick: 64% at rated airflow
6. Recommended final resistance is .50" W.G.
7. Independent test report available for performance details

OPTIONS

1. The HM Series may be supplied with polyurethane gaskets on the vertical sides of the frame for use in side access housings. Specify "with gaskets" when ordering.

INSTALLATION CONSIDERATIONS

1. The HM Series filter, when used to separate moisture, must be installed in HVAC systems with the TOP label facing upward to allow for proper drainage.
2. When purchasing special size HM Series filters, specify if the drain holes should be on the short or long dimension of the frame.

ADDITIONAL INFORMATION

1. The nominal 1" (actual 7/8") filter is 9-ply.
2. The nominal 2" (actual 1-3/4") filter is 15-ply.
3. The nominal 4" (actual 3-3/4") filter is 15-ply.

